



Big Leagues Fall 2024



Dilworth Big League Mission:

Welcome to the Big Leagues at Dilworth, which provide youth between the ages of 13 and 18+ an opportunity to continue playing baseball on full-sized fields with their friends in a fun, competitive, and structured environment.

Big Leagues Overview:

Dilworth will be offering three divisions for these teen-age players this fall. In all divisions we will play teams from across the district (e.g., Couloak, MARA, Steele Creek, etc.) and will need to travel to these locations for our away games. At the end of the fall season there is a tournament with many of the teams across the District participating to give the players a chance to get some tournament experience. At the end of spring season, Dilworth coaches will select an All-Stars team for each division to compete in Little League/Babe Ruth sanctioned tournaments. Here is an overview of the divisions. The fall season is a great opportunity for the players moving up from the small, little league fields to get used to playing on a regulation sized field. Here is an overview of the divisions.

Juniors/Seniors Divisions

Dilworth's Junior and Senior divisions are for players that are serious about baseball and team sports and want to continue to play baseball without the commitment/costs of travel baseball.

For the players in the Juniors division (13- and 14-year-old players), this will be their first opportunity to play on a regulation size baseball field. As they learn to adjust, the game speeds up; however, this division is the first step in transitioning to the big field. The last three spring seasons concluded with our Juniors All-Stars team winning the NC District 3 title and competing in the state Juniors tournament. In 2024, the Juniors won the North Carolina state banner and played in the southeast regional tournament in Bridgewater, VA!

The players in the Seniors division typically come up through the Juniors program or join us after trying travel programs. Some players will be playing for their high school team, and the baseball at this level is much more competitive. The expectation is that players in this division have been playing baseball for a long time. The last two spring seasons our Seniors All-Stars team won the NC District 3 and North Carolina state banners and competed in the southeast regional tournament in Safety Harbor, FL!





Big Leagues Fall 2024



Babe Ruth – 18u

This fall we will be offering players 18 and under (or born in 2006 or later) the opportunity to play Babe Ruth baseball through Dilworth. Three of the past 4 seasons, our 18u All Stars team competed in the southeast regional tournament. The details of which organizations will be participating this fall are still in process, but I suspect that Lake Norman, Dilworth, Pineville, Weddington, and Steele Creek will have teams. Babe Ruth is planning an 18u season very similar to the other divisions described above.



Challenge Opportunity

Leagues from across our District have expanded the “Challenge-like” division this fall to give selected players the opportunity to play additional games across the District. Historically, this has been just for the Juniors, but we are planning to field a Seniors challenge team this fall. Note, to be eligible for Dilworth’s challenge team, players must be registered and play for Dilworth’s Juniors/Seniors. During the season, games for the Challenge teams will likely be on Sundays – possibly double-headers. This is an exciting opportunity to elevate the level of competition for Juniors/Seniors-aged players.

Summary

Below is a snapshot of each of the Divisions (*note: all dates in the table below are tentative*):

Divisions	Juniors	Seniors	18u
Age (see below)	13-14	15-16	16-18
Player Evaluations and Tryouts	August 25	August 25	N/A
Team Size	12-14 per team	12-14 per team	14-18 per team
Practices Start	Week of Sept. 2 nd	Week of Sept. 2 nd	Week of Sept. 2 nd
Season/Games Start	Between Sept. 14-21	Between Sept. 14-21	Between Sept. 14-21
End of Season Tourney	Nov. 1-3	Nov. 1-3	Nov. 1-3
Home Field	Sedgefield/AGMS	Sedgefield/AGMS	Sedgefield/Southview

Registration deadline is August 23rd; however, there is a maximum number of players for each division and once the limit is reached, registration for that division will close.

Typically, all teams will practice 2-3 times per week before the season starts and then 1-2 times per week once the games start. The goal is to play between 10-12 games in the fall.



Big Leagues Fall 2024

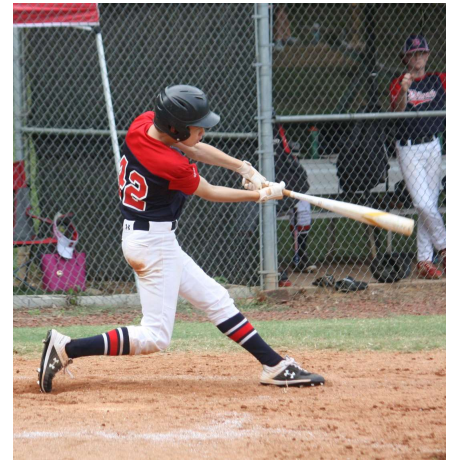
Player Evaluations/Tryouts:

All players that are Little League ages 13 and 16 (see age chart below) will go through evaluations on August 25th. The purpose of these evaluations is to allow coaches to balance the Dilworth teams in each division.

Depending on the numbers at each level, there may be players that are asked to consider being “dual-rostered”. For example, if the 18U team is short a few players, a 16-year-old could be rostered on the Seniors team and the 18U team.

Uniforms:

In the Big Leagues, we like our players to look good! At this age however, one of the biggest challenges with uniforms is determining the proper pant size, and in the past, many parents were exchanging pants trying to find a pair that fit properly. As a result, we are asking parents to purchase game pants for their players. Please get all white or white with navy blue piping down the side and preferably elastic bottom or knickers style. Dilworth will provide the players with a hat, jersey, belt, and socks.



Game Details:

In the Big Leagues, we play seven (7) inning games with a mandatory “mercy” rule (15 runs after 4 innings or 10 runs after 5 innings). Pitching count rules are applicable in all divisions (but vary depending on age). For Juniors, Little League adopted the USA bat standards, which are further described in the following link - <http://www.littleleague.org/learn/equipment/baseballbatinfo.htm>. While not required, we encourage our players to use no more than a drop-5 bat (although larger drops are accepted). BBCOR (drop-3) bats are acceptable in Juniors and are required in Seniors and 18U.

Age Determination:

This fall all Leagues are using the 2025 Little League Age Chart (Juniors and Seniors) – the chart below should help you determine your son’s Baseball Age. The 18u division will use Babe Ruth’s 2025 Age Chart.



Big Leagues Fall 2024

To play in the **Junior League** this fall season your son will need to be born between:
September 1, 2010 and August 31, 2012.

To play in the **Senior League** this fall season your son will need to be born between:
September 1, 2008 and August 31, 2010.

To play on the **Babe Ruth 18U team** this fall season your son will need to be born between:
January 1, 2006 and April 30, 2009.

2025 Little League® Age Chart



Match month (top line) and box with year of birth. League age indicated at right.

JAN	FEB	MAR	APR	MAY	JUN	JUL	AUG	SEP	OCT	NOV	DEC	AGE
2012	2012	2012	2012	2012	2012	2012	2012	2011	2011	2011	2011	13
2011	2011	2011	2011	2011	2011	2011	2011	2010	2010	2010	2010	14
2010	2010	2010	2010	2010	2010	2010	2010	2009	2009	2009	2009	15
2009	2009	2009	2009	2009	2009	2009	2009	2008	2008	2008	2008	16



The Big League Fields:

Sedgefield Middle School (Home of Dilworth’s Junior and Senior League):

Most of you already know where Sedgefield is located. The baseball field, also known as the “Sedge” is accessed from McDonald Ave. Hopefully, the map below helps you find us!

Overhead of the Sedge





Big Leagues Fall 2024

Alexander Graham Middle School - - 1800 Runnymede Ln, Charlotte, NC 28211

This fall we will have access to the baseball field at AG Middle School. We will primarily use this field for practices; however, depending on how many teams we have, we could also use this field for some home games. The map to the right shows where the school and baseball field are located.

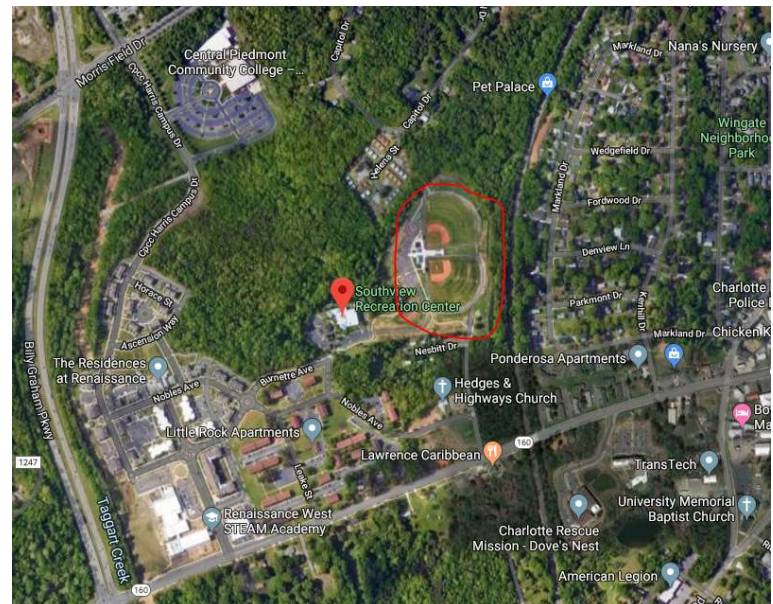
Overhead of Map of AG Middle School



Southview (Fields 1 and 2) - - 1720 Vilma Street, Charlotte, NC 28208

While these fields are a little further out, they are nice and have lights. These fields will be utilized as a home field for weeknight games and will serve as practice fields for all of our Big League teams. The map to the right shows where these fields are located.

Overhead of Southview



Questions:

If you have any questions, please reach out to Dilworth Little League's Big Leagues Commissioner – Jay Brietz at 704-996-4655 (cell) or (jaybrietz@gmail.com).